

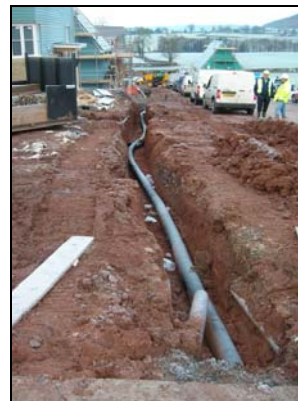
## Biomass District Heating

### Moor Park School, Ludlow



- 240 kW KWB Powerfire wood chip boiler
- Ten separate buildings
- 445 metres total length
- Commissioned October 2008

### Rocks Green, Ludlow



- 2 x 150 kW KWB Powerfire wood chip boilers
- 91 houses
- Commissioned summer 2008

## Grange Farm, Herefordshire



- 100 kW Froling Turbomatic wood chip boiler
- Farmhouse plus five barn conversions
- 165 m total length
- Commissioned March 2007
- *Sole heating source – no backup*

## Cross Street South, Wolverhampton



- 100 kW KWB Multifire wood chip boiler
- 30 affordable homes
- Commissioned summer 2008

